

LOWER ROOF LAYOUT

Trusstech SA Pty Ltd  
ABN: 40 1 318 22 140 16 High Street Dry Creek SA 5094 Ph: 08 8260 6006



OAKRIDGE  
BUILDING SERVICES

PH : 83837222  
FAX : 83837225

CONVENTIONAL TIMBER DETAILS

CEILING JOISTS 90x35 MGP10 @ 600 CTS UNO  
HANGING BEAMS @ 1800 MAX CTS

TRUSSES & BRACING TO BE INSTALLED, ERECTED & BRACED IN ACCORDANCE WITH AS4440-2004

TRUSS DETAILS  
STABILIZER/HANGER @ 1800 CTS MAX UNO  
BEARING WIDTH FOR TRUSSES 90mm UNO

TS = TRUNCATED STANDARD  
TG = TRUNCATED GIRDER

S/B = SPEED BRACE  
SV = SCOTCH VALLEY

NOTE: TRUSSES & JOISTS TO BE POSITIONED DIRECTLY OVER STUDS

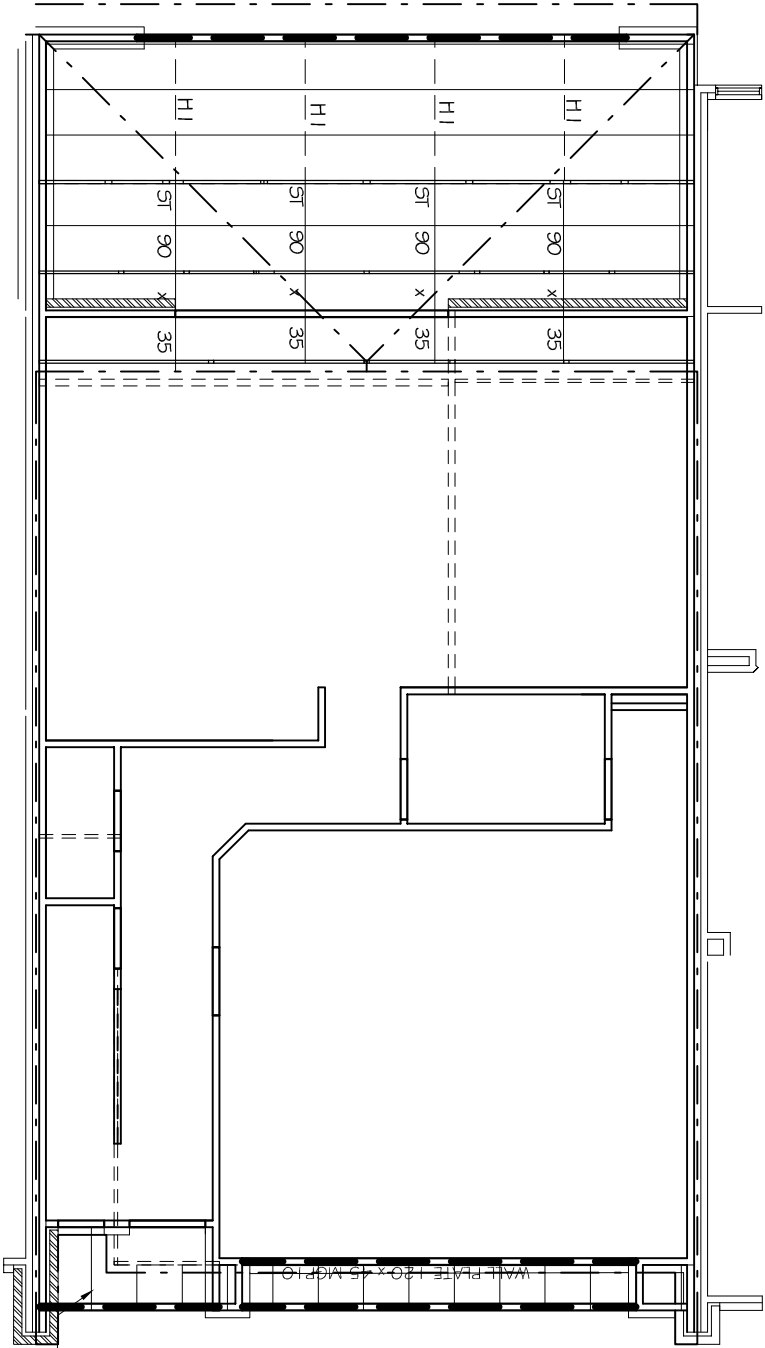
UNLESS SHOWN OTHERWISE ON LAYOUT, NO SPECIAL LOADS HAVE BEEN ALLOWED.  
EG - AC UNITS, SOLAR PANELS ETC.

MINIMUM BEARING WIDTH FOR TIMBER TRUSSES SHOULD BE 70MM. FOR BEARING WIDTH LESS THAN 70MM, CONFIRMATION FROM THE TRUSS ENGINEER SHOULD BE SOUGHT.

TRUNCATED GIRDER HAS BEEN DESIGNED TO CARRY CONVENTIONAL HIP END TIMBER (RAFTERS, HANGING BEAMS & HIPs)

X = INTERNAL SUPPORT / CANTILEVER POINT

T9 TG1930  
T6 TS3130  
T8



PURLINS : 90x45 MGP10 @ 900mm cts  
generally with maximum endspans of 900mm  
\* JOINTS TO BE STAGGERED

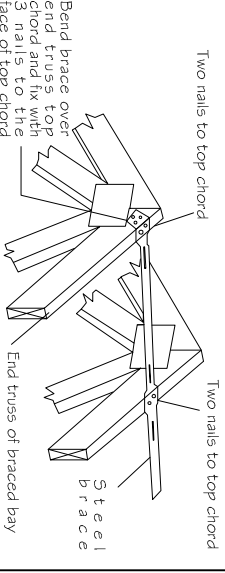
- RAFTERS : 120x35 MGP10 @ 600mm cts  
\* Fixed to floor beams using rafter bracket FB5120
- GRADED 90x45 MGP10 PURLINS @ 1200 cts  
ON 90x35 SOLIDIES @ MAX 1.2m cts

Timber: H0 Dry Swd (can include KD Hwd)	Roofing: Metal Sheet	Wind / Ext / Int: N1 / 0.9 / 0.2	Customer: DEDICATED DEVELOPMENT PTY LTD Site Address: 638 BURBRIDGE RD, WEST BEACH	SHEET 2/6	
Pitch: 22.5 Deg	TC fix/rest: Metal @ 1200c / 1200	Structural Fascia Type: No As per AS 1684.1		Date: 12/02/2019	
Overhang: 600 mm	Ceiling: Plaster 10mm Supa Span	Ground Snow Load: Sg = 0 kPa	Detailer: Matt Ople Signed:	Scale: 1 : 100	
Spacing: 1200mm	BC fix/rest: Direct fix @ 600c / 600	Structure Type: House		Job No: TT02398	

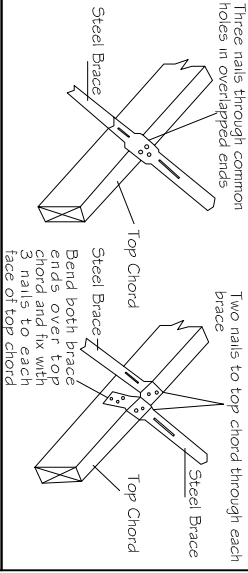
DWELLING 2

S:\OAKRIDGE TAKEOFFS\DEDICATED DEVELOPMENTS\638 BURBRIDGE RD\DWLG 2 638 BURBRIDGE RD.dwg

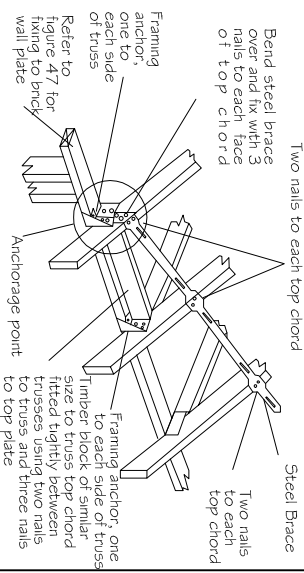
RAFTERS 120x35 MGP10 @ 600 CTS FOR TILES & 1200 CTS FOR IRON UNO  
HIPs LOWER 190x35 MGP10 UNO  
HIPs UPPER 120x35 MGP10 UNO  
VT=VALLEY TRIM 120x35 MGP10  
RP= RAKING PLATE 190 x 45 MFG10  
RIDGE 140x35 MGP10 UNO  
UNDERPURLINS 130x63 LVL  
COLLAR TIES 90x35 M10 @ 1200 cts < 4.2m  
120x35 M10 @ 1200 cts > 4.2m  
JOINT GROUP=JD5  
ALL MATERIALS ALLOWED AS PER AS 1684.2-2010  
HANGERS:  
H1 = 120x35 MGP10  
H2 = 140x35 MGP10  
H3 = 190x35 MGP10  
H4 = 190x45 MGP10  
H5 = 240x45 MGP10



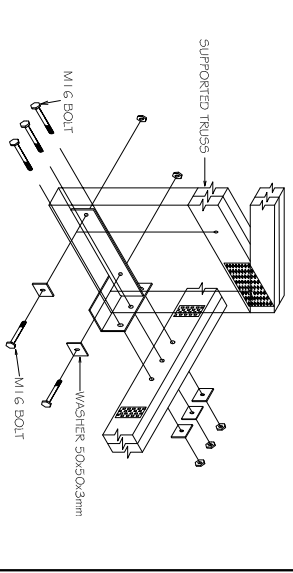
SPEED BRACE SPLICING DETAILS



SPEED BRACE FIXING DETAILS AT HEEL



HIGH-LOAD TRUSS BOOT



TRUSS BOOT

